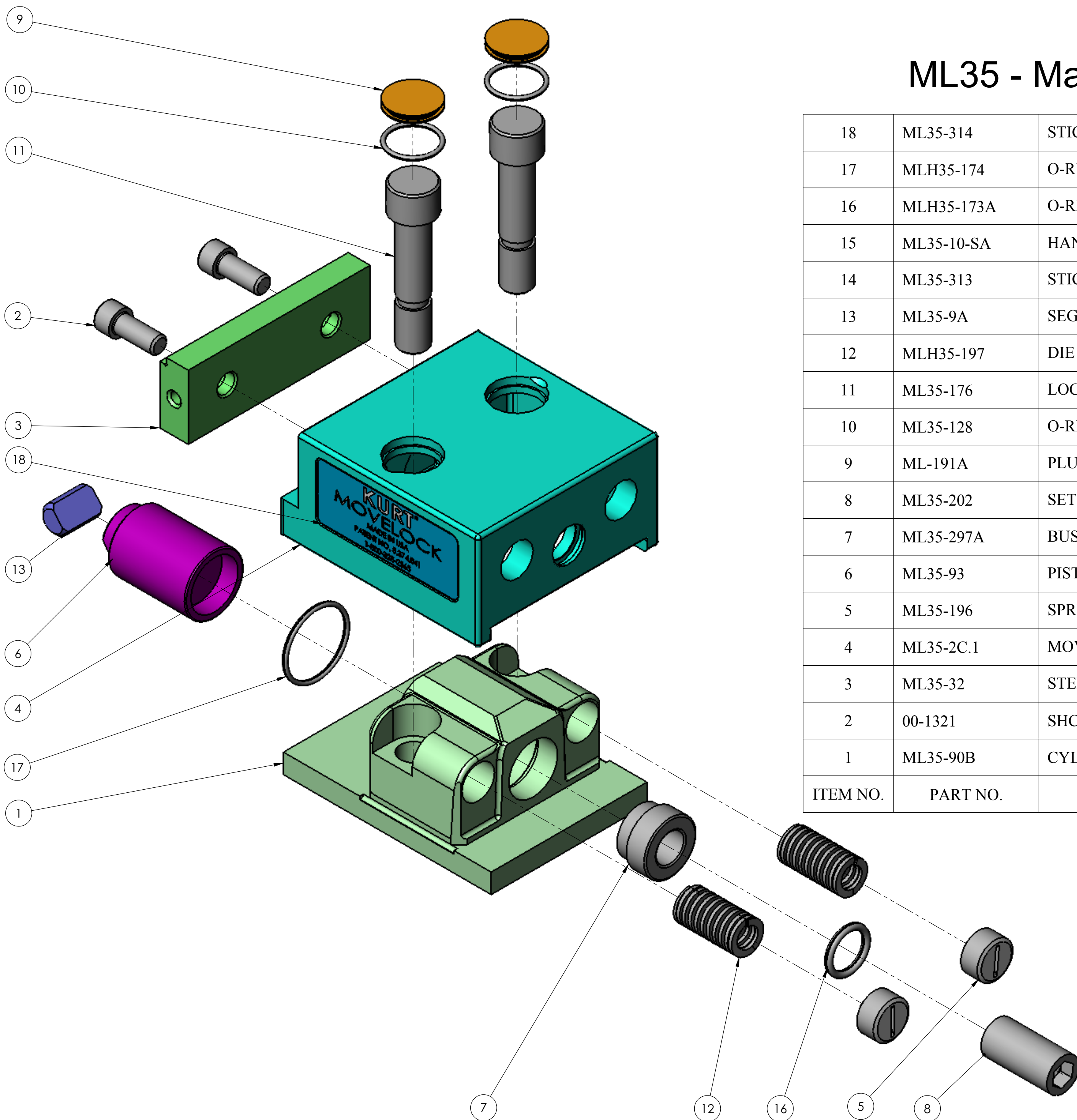


# MoveLock™ Modular System

## ML35 - Manual Movable Jaw



ITEM NO.	PART NO.	DESCRIPTION	QTY
18	ML35-314	STICKER (RIGHT)	1
17	MLH35-174	O-RING #24 70 DUROMETER	1
16	MLH35-173A	O-RING #114 70 DUROMETER	1
15	ML35-10-SA	HANDLE ASSEMBLY (NOT SHOWN)	1
14	ML35-313	STICKER (LEFT)	1
13	ML35-9A	SEGMENT	1
12	MLH35-197	DIE SPRING 11/32 ID X 5/8 OD 13.5LBS/1/8" RATE	2
11	ML35-176	LOCATING BOLT $\phi$ 1/2 X 2 1/4LG	2
10	ML35-128	O-RING #18 70 DUROMETER	2
9	ML-191A	PLUG (PROTECTIVE CAP)	2
8	ML35-202	SET SCREW	1
7	ML35-297A	BUSHING	1
6	ML35-93	PISTON (MANUAL)	1
5	ML35-196	SPRING RETAINING SCREW	2
4	ML35-2C.1	MOVABLE JAW	1
3	ML35-32	STEPPED JAW PLATE	1
2	00-1321	SHCS 5/16-18NC X 3/4 LG	2
1	ML35-90B	CYLINDER HOUSING (MANUAL)	1

Kurt Manufacturing Company  
 Industrial Products Division  
 Minneapolis, MN  
 1-800-328-2565  
[www.kurtworkholding.com](http://www.kurtworkholding.com)